



Raycap

Heat Shrinkable Solutions for
Low and Medium Voltage Applications

RayTerm

Heat Shrink Indoor/Outdoor Termination

Raycap's heatshrink terminations are designed to accommodate a stable performance of stress grading with excellent antitracking properties, to operate successfully under the most harsh environments for more than 30 years. Custom kits are available for up to 6 core cables and special applications, like mines.

0.6-1.0(1.2)kV

3-core cables without Armour

Indoor Reference	Outdoor Reference	Size Range (mm ²)
RayTerm IH0131	RayTerm OH0131	4-16
RayTerm IH0132	RayTerm OH0132	25-50
RayTerm IH0133	RayTerm OH0133	70-150
RayTerm IH0134	RayTerm OH0134	185-300
RayTerm IH0135	RayTerm OH0135	400-500

6/10(12)kV

1-core cables without Armour

Indoor Reference	Outdoor Reference	Size Range (mm ²)
RayTerm IH1011	RayTerm OH1011	16-25
RayTerm IH1012	RayTerm OH1012	35-70
RayTerm IH1013	RayTerm OH1013	95-240
RayTerm IH1014	RayTerm OH1014	300-400
RayTerm IH1015	RayTerm OH1015	500-800
RayTerm IH1015	RayTerm OH1016	1000

3-core cables without Armour

Indoor Reference	Outdoor Reference	Size Range (mm ²)
RayTerm IH1031	RayTerm OH1031	16-25
RayTerm IH1032	RayTerm OH1032	35-70
RayTerm IH1033	RayTerm OH1033	95-240
RayTerm IH1034	RayTerm OH1034	300-400

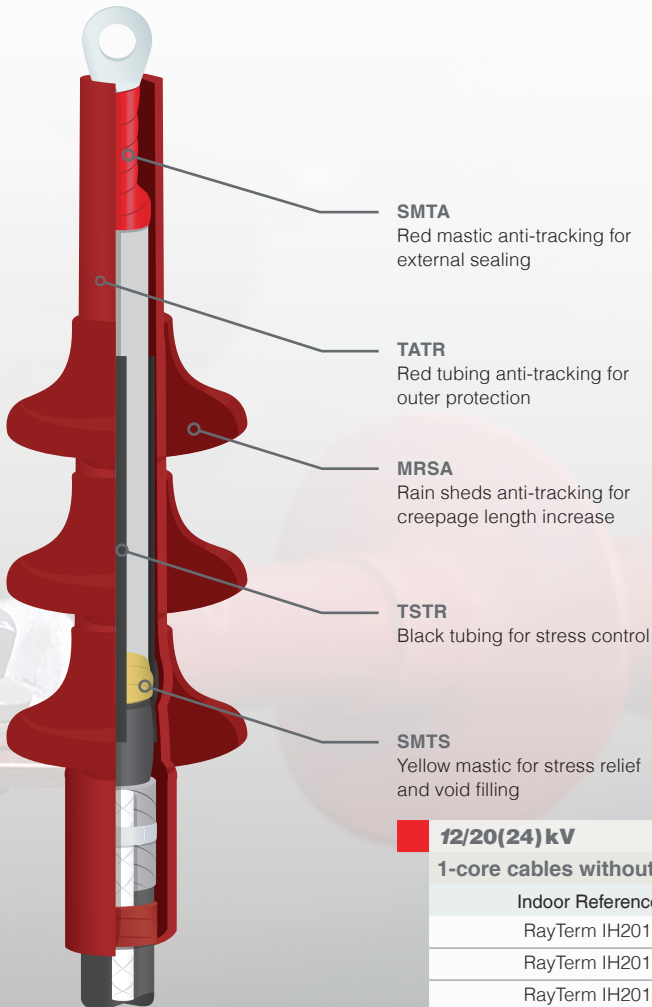
8.5/15(17.5)kV

1-core cables without Armour

Indoor Reference	Outdoor Reference	Size Range (mm ²)
RayTerm IH1511	RayTerm OH1511	16-25
RayTerm IH1512	RayTerm OH1512	35-70
RayTerm IH1513	RayTerm OH1513	95-240
RayTerm IH1514	RayTerm OH1514	300-400
RayTerm IH1515	RayTerm OH1515	500-800
RayTerm IH1516	RayTerm OH1516	1000

3-core cables without Armour

Indoor Reference	Outdoor Reference	Size Range (mm ²)
RayTerm IH1531	RayTerm OH1531	16-25
RayTerm IH1532	RayTerm OH1532	35-70
RayTerm IH1533	RayTerm OH1533	95-240
RayTerm IH1534	RayTerm OH1534	300-400



SMTA
Red mastic anti-tracking for external sealing

TATR
Red tubing anti-tracking for outer protection

MRSA
Rain sheds anti-tracking for creepage length increase

TSTR
Black tubing for stress control

SMTS
Yellow mastic for stress relief and void filling

RayTerm Benefits

- Indoor and outdoor termination with extended tail length if required, for single or three core polymeric insulated cables up to 36kV
- Complete kits, compact dimensions with wide range, covering all type of cables
- A variety of cable terminations are available for several cable types (plastic or paper insulated, low or medium voltage cables, with or without armour etc.)
- Terminations can be provided with or without lugs, either mechanical shear-off or crimped, ALU, CU or bimetallic
- Excellent tracking and erosion properties
- UV Resistant
- Chemically and fungi resistant

12/20(24) kV

1-core cables without Armour

Indoor Reference	Outdoor Reference	Size Range (mm ²)
RayTerm IH2011	RayTerm OH2011	25-50
RayTerm IH2012	RayTerm OH2012	70-185
RayTerm IH2013	RayTerm OH2013	240-300
RayTerm IH2014	RayTerm OH2014	400-630
RayTerm IH2015	RayTerm OH2015	800-1000

3-core cables without Armour

Indoor Reference	Outdoor Reference	Size Range (mm ²)
RayTerm IH2031	RayTerm OH2031	25-50
RayTerm IH2032	RayTerm OH2032	70-185
RayTerm IH2033	RayTerm OH2033	240-300
RayTerm IH2034	RayTerm OH2034	400-500

18/30(36) kV

1-core cables without Armour

Indoor Reference	Outdoor Reference	Size Range (mm ²)
RayTerm IH3011	RayTerm OH3011	50-95
RayTerm IH3012	RayTerm OH3012	120-185
RayTerm IH3013	RayTerm OH3013	240-300
RayTerm IH3014	RayTerm OH3014	400-630
RayTerm IH3015	RayTerm OH3015	800-1000
RayTerm IH3016	RayTerm OH3016	1200

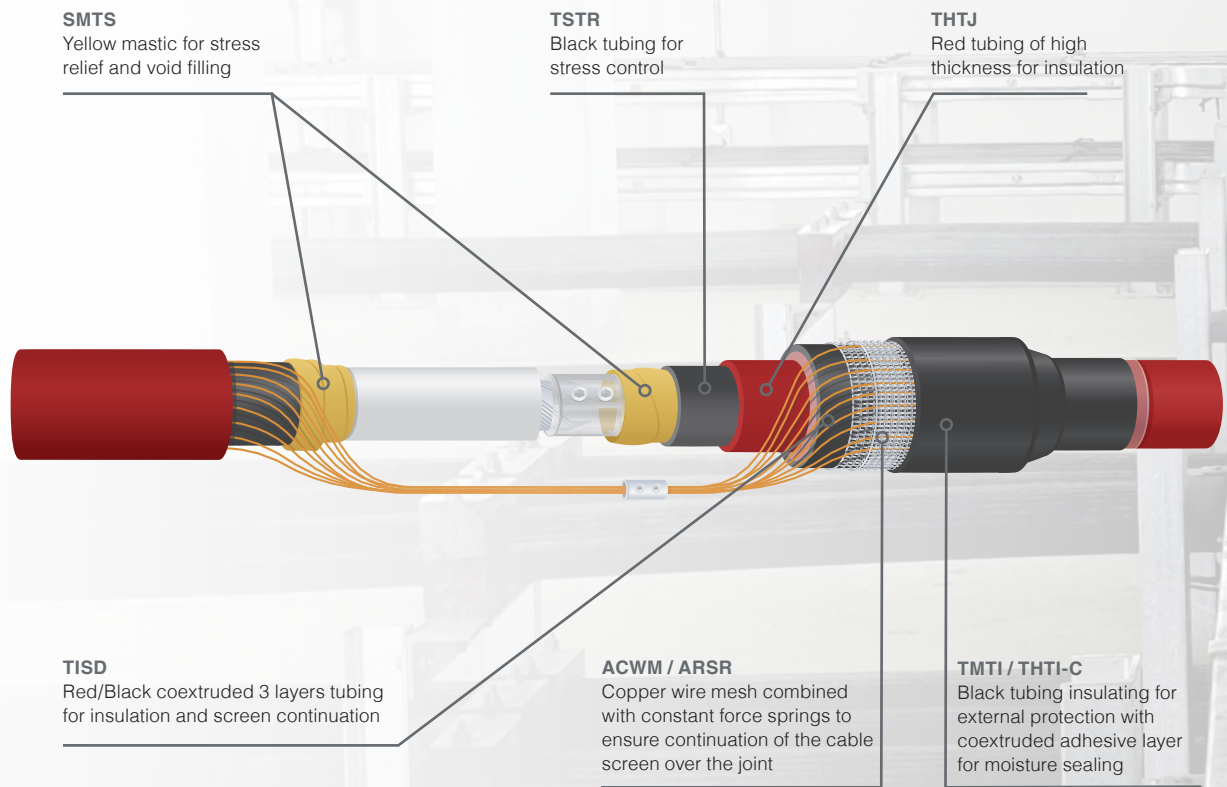
3-core cables without Armour

Indoor Reference	Outdoor Reference	Size Range (mm ²)
RayTerm IH3031	RayTerm OH3031	50-95
RayTerm IH3032	RayTerm OH3032	120-240
RayTerm IH3033	RayTerm OH3033	300-400

RayJoint

Heat Shrink Joint

Raycap's heat shrink joints are designed to operate successfully for more than 30 years. The stress control tubing is developed so that to have a stable performance under elevated temperatures of the conductor. The innovative triple co-extruded insulating and semi-conductive tube offers both enhanced pressure to eliminate partial discharges as well as a much higher than competition insulating thickness. The outer protection of the joint can be done either with a high wall insulating tube or fiber reinforced wraparound, for extra mechanical strength and space saving requirement in manholes.



RayJoint Benefits

- Connection of polymeric (XLPE, EPR) and paper insulated cables, 1 or 3 cores up to 36kV
- Waterproof, adequate for direct buried cables
- Complete kits, compact dimensions, with wide range, covering all cable constructions
- Straight through, transition, branch and branch transition joints are available.
- High mechanical strength
- The conductor connection can either be done by crimped or mechanical shear-off connectors

0.6-1.0(1.2)kV**3-core cables without Armour**

Indoor Reference	Size Range (mm ²)
RayJoint SH0131	1.5-6
RayJoint SH0132	10-16
RayJoint SH0133	25-35
RayJoint SH0134	50-70
RayJoint SH0135	95-150
RayJoint SH0136	185-300

6/10(12)kV**1-core cables without Armour**

Indoor Reference	Size Range (mm ²)
RayJoint SH1011	16-25
RayJoint SH1012	35-70
RayJoint SH1013	95-150
RayJoint SH1014	185-300
RayJoint SH1015	400-500
RayJoint SH1016	630

3-core cables without Armour

Indoor Reference	Size Range (mm ²)
RayJoint SH1031	16-25
RayJoint SH1032	50-95
RayJoint SH1033	120-185
RayJoint SH1034	240-300

8.5/15(17.5)kV**1-core cables without Armour**

Indoor Reference	Size Range (mm ²)
RayJoint SH1511	25-35
RayJoint SH1512	50-95
RayJoint SH1513	120-185
RayJoint SH1514	240-300
RayJoint SH1515	400-630

3-core cables without Armour

Indoor Reference	Size Range (mm ²)
RayJoint SH1531	25-35
RayTerm SH1532	50-95
RayTerm SH1533	120-185
RayTerm SH1534	240-300

12/20(24)kV**1-core cables without Armour**

Indoor Reference	Size Range (mm ²)
RayJoint SH2011	25-95
RayJoint SH2012	120-240
RayJoint SH2013	300-400
RayJoint SH2014	500-630
RayJoint SH2015	800

3-core cables without Armour

Indoor Reference	Size Range (mm ²)
RayJoint SH2031	25-95
RayJoint SH2032	120-240
RayJoint SH2033	300-400
RayJoint SH2034	500-630

18/30(36)kV**1-core cables without Armour**

Indoor Reference	Size Range (mm ²)
RayJoint SH3011	35-70
RayJoint SH3012	95-150
RayJoint SH3013	185-400
RayJoint SH3014	500-630
RayJoint SH3015	800-1000
RayJoint SH3016	1200

3-core cables without Armour

Indoor Reference	Size Range (mm ²)
RayJoint SH3031	50-95
RayJoint SH3032	120-240
RayJoint SH3033	300-400

Accessories

Other cable accessories are available from Raycap for medium and high voltage applications.

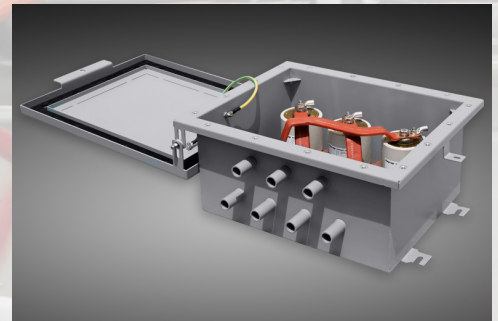
Screened Separable Connectors:

A to C bushing type, up to 1250A,
up to 42kV



Sheath Voltage Limiters:

Unique design for cross-bonding with
Strikesorb based SVL



Earth Kits and Screen Continuation Components:

Cable glands, copper wire mesh, steel mesh, copper braids, force springs



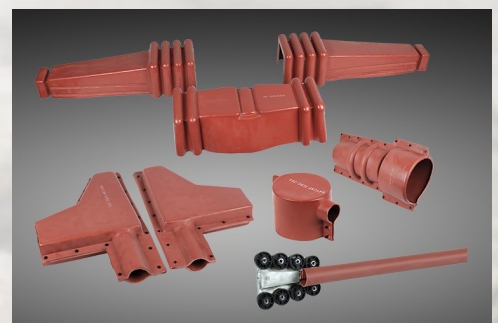
Connectors and Lugs:

Mechanical shear-off, crimped,
bimetallic



Insulating Enhancement Solutions:

Moulded covers, tailor-made designs
for bushings and the overhead network





About Raycap

With more than three decades experience and R&D in materials technology and cable accessories, Raycap's heat shrink joints and terminations cover the need for easy installation, reliability and long life time. The combination of scientific design with innovative material properties enables Raycap's cable accessories to operate successfully under even the most harsh environments, often exceeding the life span of the cables themselves.

Raycap's power cable joints and terminations cover all possible types of cables and deliver superior performance. They can be used on power cables from 1,2kV up to 36kV, with single or multi core, wire or tape screened, and armored or unarmored construction. Special earthing and screen continuation kits which eliminate the need for soldering, cable glands, flexible insulating boots, tailor made insulation enhancement covers and other accessories are available. Raycap cable accessories are certified and type tested in independent labs according to HD 629.1 S3, HD 629.2 S3 and EN 50393.

Supported by a vertically integrated organization, Raycap has R&D facilities, manufacturing and kitting operations in Europe and the United States. This enables Raycap to carefully control the whole manufacturing process.

Solutions offered in this product line include RayTerm, indoor and outdoor termination systems; RayJoint, heat-shrink joints and their associated accessories. All components are tested according to EN 50655-2:2017.



Raycap Worldwide Locations



Raycap Inc.
806 South Clearwater Loop
Post Falls, ID 83854
United States of America

7555-A Palmetto Commerce Pkwy
North Charleston, SC 29420
United States of America

46 Sellers Street
Kearny, NJ 07032
United States of America

Raycap GmbH
Parking 11
85748 Garching Munich
Germany

Raycap S.A.
Telou & Petroutsou 14
15124 Maroussi Athens
Greece

Raycap S.A. Manufacturing
Industrial Area of Drama
66100 Drama
Greece

Raycap d.o.o.
Poslovna cona Žeje pri Komendi
Pod hrasti 7
1218 Komenda
Slovenia

Raycap Cyprus Ltd.
46 Lefkosias Street
Industrial Area of Dali
2540 Nicosia
Cyprus

Raycap SAS
84 rue Charles Michels, Building B
93200 Saint-Denis
France

Raycap Corporation SRL
102, Barbu Vacarescu,
entrance D, 4th floor D22
020283 Bucharest
Romania

Raycap (Suzhou) Co. Ltd.
Block B, Phase II of New Sea Union
No. 58 Heshun Road
SIP, Suzhou 215122
Jiāngsu Province
China



Raycap

raycap.com • info@raycap.com

Raycap is a registered trademark.
© 2024 Raycap All rights reserved.
G09-00-133 240321