

Overvoltage Protection
SafeTec T2 1+0
Class II • Type 2 • Type 1CA



Location of Use: Sub-distribution Boards
 Network Systems: TN-S, TN-C, TT (only L-N)
 Mode of Protection: L-PE, N-PE (only TN-S), L-PEN, L-N
 IEC/EN/UL Category: Class II / Type 2 / Type 1CA
 Safety: Current Limiting Technology
 Housing: Pluggable Design
 Compliance: IEC 61643-11:2011
 EN 61643-11:2012+A11:2018
 UL 1449 5th Edition

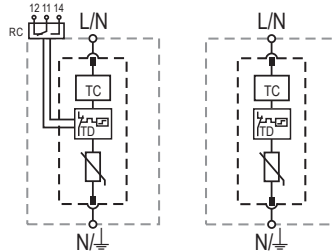
Technical Data

SafeTec T2-xxx-1+0(-R)		75	150	300	350	480	550	750	880
IEC Electrical									
Nominal AC Voltage (50/60Hz)	U_o/U_n	60V	120V	240V	277V	400V	400V	600V	600V
Maximum Continuous Operating Voltage (AC)	U_c	75V	150V	300V	350V	480V	550V	750V	880V
Nominal Discharge Current (8/20 μ s)	I_n	20 kA	20 kA	20 kA	20 kA	20 kA	20 kA	20 kA	20 kA
Maximum Discharge Current (8/20 μ s)	I_{max}	50 kA	50 kA	50 kA	50 kA	50 kA	50 kA	35 kA	35 kA
Voltage Protection Level	U_p	800V	1250V	1650V	1750V	2300V	2500V	3500V	3600V
Response Time	t_A	< 25 ns							
Overcurrent Protection (max)		315 A/250 A gG							
Short-Circuit Current Rating (AC)	I_{SCCR}	25 kA/50 kA							
TOV Withstand 120min	U_T	150V	255V	442V	529V	762V	918V	1200V	1250V
Number of Ports		1							
UL Electrical									
Maximum Continuous Operating Voltage (AC)	MCOV	75V	150V	300V	350V	480V	550V	750V	880V
Voltage Protection Rating	VPR	600V	700V	1200V	1200V	1500V	1800V	2500V	2500V
Nominal Discharge Current (8/20 μ s)	I_n	20 kA	20 kA	20 kA	20 kA	20 kA	20 kA	20 kA	20 kA
Short-Circuit Current Rating (AC)	SCCR	85 kA	200 kA	150 kA	200 kA	200 kA	200 kA	200 kA	200 kA
Additional Electrical Parameters (Tests performed within Raycap testing laboratory only)									
Residual Voltage at 5 kA (8/20 μ s)	U_{res}	400V	750V	1000V	1300V	1600V	1900V	2700V	2800V
Overcurrent Protection (min)		80 A gG							
Mechanical & Environmental									
Operating Temperature Range	T_a	-40 °F to +185 °F [-40 °C to +85 °C]							
Permissible Operating Humidity	RH	5%...95%							
Altitude (max)		13123 ft [4000m]							
Terminal Screw Torque	M_{max}	40 lbf-in [4.5Nm]							
Conductor Cross Section (max)		2 AWG (Solid, Stranded) / 4 AWG (Flexible) 35 mm ² (Solid, Stranded) / 25 mm ² (Flexible)							
Mounting		35 mm DIN Rail, EN 60715							
Degree of Protection		IP 20 (built-in)							
Housing Material		Thermoplastic: Extinguishing Degree UL 94 V-0							
Thermal Protection		Yes							
Operating State / Fault Indication		Green Flag / Not Green Flag							
Remote Contacts (RC)		Optional							
RC Switching Capacity		AC: 250V/1A, 125V/1A; DC: 48V/0.5A, 24V/0.5A, 12V/0.5A							
RC Conductor Cross Section (max)		16 AWG (Solid) / 1.5 mm ² (Solid)							

Internal Configuration

Legend

L	Line Conductor Terminal
N	Neutral Conductor Terminal
⏏	PE/G Conductor Terminal
RC	Remote Contacts Terminal (Optional)
TC	Thermal Control Function
TD	Thermal Disconnect



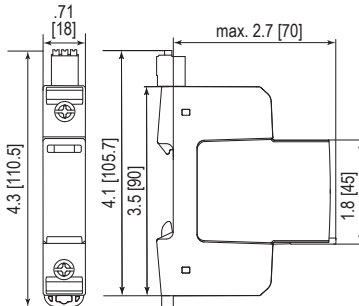
SafeTec T2-xxx-1+0(-R)

Order Information

Order Code	75	150	300	350	480	550	750	880
SafeTec T2-xxx-1+0	59.0132	59.0134	59.0136	59.0138	59.0140	59.0142	59.0144	59.0146
SafeTec T2-xxx-1+0-R (with remote contacts)	59.0133	59.0135	59.0137	59.0139	59.0141	59.0143	59.0145	59.0147
SafeTec T2-xxx-P (plug)	59.0125	59.0126	59.0127	59.0128	59.0129	59.0299	59.0130	59.0131

Dimensions & Packaging

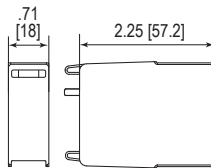
inches [mm]



Complete Unit

SafeTec T2-xxx-1+0		75	150	300	350	480	550	750	880
Weight	pounds	.279	.290	.297	.314	.317	.328	.345	.350
	grams	127	132	135	143	144	149	157	159
SafeTec T2-xxx-1+0-R									
Weight	pounds	.295	.306	.312	.330	.332	.343	.361	.365
	grams	134	139	142	150	151	156	164	166
DIN 43880 Dimension		1 TE / .71" [18]							
Packaging Dimensions (HxWxL)		4.3 x 4.5 x 13.8" [109 x 115 x 352 mm]							
Standard Order Quantity		12 Units							

Spare Plug



Single Unit

SafeTec T2-xxx-P		75	150	300	350	480	550	750	880
Weight	pounds	.128	.139	.146	.163	.165	.176	.194	.198
	grams	58	63	66	74	75	80	88	90
DIN 43880 Dimension		1 TE / .71" [18]							
Packaging Dimensions (HxWxL)		3.2 x 4.5 x 12" [83 x 116 x 305 mm]							
Standard Order Quantity		24 Units							

Overvoltage Protection
SafeTec T2 2+0
Class II • Type 2 • Type 1CA



Location of Use: Sub-distribution Boards
 Network Systems: TN-S
 Mode of Protection: L-N, N-PE
 IEC/EN/UL Category: Class II / Type 2 / Type 1CA
 Safety: Current Limiting Technology
 Housing: Pluggable Design
 Compliance: IEC 61643-11:2011
 EN 61643-11:2012+A11:2018
 UL 1449 5th Edition

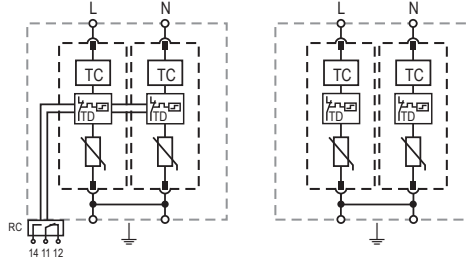
Technical Data

SafeTec T2-xxx-2+0(-R)		75	150	300	350	480	550	750	880
IEC Electrical									
Nominal AC Voltage (50/60Hz)	U_o/U_n	60V	120V	240V	277V	400V	400V	600V	600V
Maximum Continuous Operating Voltage (AC)	U_c	75V	150V	300V	350V	480V	550V	750V	880V
Nominal Discharge Current (8/20 μ s)	I_n	20 kA	20 kA	20 kA	20 kA	20 kA	20 kA	20 kA	20 kA
Maximum Discharge Current (8/20 μ s)	I_{max}	50 kA	50 kA	50 kA	50 kA	50 kA	50 kA	35 kA	35 kA
Voltage Protection Level	U_p	800V	1250V	1650V	1750V	2300V	2500V	3500V	3600V
Response Time	t_A	< 25 ns							
Overcurrent Protection (max)		315 A/250 A gG							
Short-Circuit Current Rating (AC)	I_{SCCR}	25 kA/50 kA							
TOV Withstand 120min	U_T	150V	255V	442V	529V	762V	918V	1200V	1250V
Number of Ports		1							
UL Electrical									
Maximum Continuous Operating Voltage (AC)	MCOV	75V	150V	300V	350V	480V	550V	750V	880V
Voltage Protection Rating	VPR	600V	700V	1200V	1200V	1500V	1800V	2500V	2500V
Nominal Discharge Current (8/20 μ s)	I_n	20 kA	20 kA	20 kA	20 kA	20 kA	20 kA	20 kA	20 kA
Short-Circuit Current Rating (AC)	SCCR	85 kA	200 kA	150 kA	200 kA	200 kA	200 kA	200 kA	200 kA
Additional Electrical Parameters (Tests performed within Raycap testing laboratory only)									
Residual Voltage at 5 kA (8/20 μ s)	U_{res}	400V	750V	1000V	1300V	1600V	1900V	2700V	2800V
Overcurrent Protection (min)		80 A gG							
Mechanical & Environmental									
Operating Temperature Range	T_a	-40 °F to +185 °F [-40 °C to +85 °C]							
Permissible Operating Humidity	RH	5%...95%							
Altitude (max)		13123 ft [4000m]							
Terminal Screw Torque	M_{max}	40 lbf-in [4.5Nm]							
Conductor Cross Section (max)		2 AWG (Solid, Stranded) / 4 AWG (Flexible) 35 mm ² (Solid, Stranded) / 25 mm ² (Flexible)							
Mounting		35 mm DIN Rail, EN 60715							
Degree of Protection		IP 20 (built-in)							
Housing Material		Thermoplastic: Extinguishing Degree UL 94 V-0							
Thermal Protection		Yes							
Operating State / Fault Indication		Green Flag / Not Green Flag							
Remote Contacts (RC)		Optional							
RC Switching Capacity		AC: 250V/1A, 125V/1A; DC: 48V/0.5A, 24V/0.5A, 12V/0.5A							
RC Conductor Cross Section (max)		16 AWG (Solid) / 1.5 mm ² (Solid)							

Internal Configuration

Legend

- L Line Conductor Terminal
- N Neutral Conductor Terminal
- ⏚ PE/G Conductor Terminal
- RC Remote Contacts Terminal (Optional)
- TC Thermal Control Function
- TD Thermal Disconnect



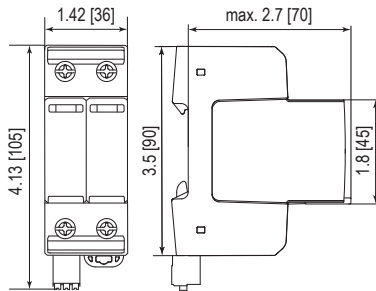
SafeTec T2-xxx-2+0(-R)

Order Information

Order Code	75	150	300	350	480	550	750	880
SafeTec T2-xxx-2+0	59.0345	59.0148	59.0150	59.0152	59.0154	59.0156	59.0158	59.0160
SafeTec T2-xxx-2+0-R (with remote contacts)	59.0346	59.0149	59.0151	59.0153	59.0155	59.0157	59.0159	59.0161
SafeTec T2-xxx-P (plug)	59.0125	59.0126	59.0127	59.0128	59.0129	59.0299	59.0130	59.0131

Dimensions & Packaging

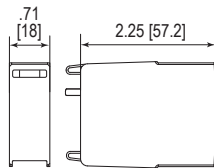
inches [mm]



Complete Unit

SafeTec T2-xxx-2+0	75	150	300	350	480	550	750	880
Weight	pounds	.565	.587	.600	.636	.640	.662	.697
	grams	256	266	272	288	290	300	316
SafeTec T2-xxx-2+0-R								
Weight	pounds	.585	.607	.620	.655	.660	.682	.717
	grams	265	275	281	297	299	309	325
DIN 43880 Dimension	2 TE / 1.42" [36]							
Packaging Dimensions (HxWxL)	4.3 x 4.5 x 13.8" [109 x 115 x 352 mm]							
Standard Order Quantity	7 Units							

Spare Plug



Single Unit

SafeTec T2-xxx-P	75	150	300	350	480	550	750	880
Weight	pounds	.128	.139	.146	.163	.165	.176	.194
	grams	58	63	66	74	75	80	88
DIN 43880 Dimension	1 TE / .71" [18]							
Packaging Dimensions (HxWxL)	3.2 x 4.5 x 12" [83 x 116 x 305 mm]							
Standard Order Quantity	24 Units							

Overvoltage Protection
SafeTec T2 3+0
Class II • Type 2 • Type 1CA



Location of Use: Sub-distribution Boards
 Network Systems: TN-C
 Mode of Protection: L-PEN
 IEC/EN/UL Category: Class II / Type 2 / Type 1CA
 Safety: Current Limiting Technology
 Housing: Pluggable Design
 Compliance: IEC 61643-11:2011
 EN 61643-11:2012+A11:2018
 UL 1449 5th Edition

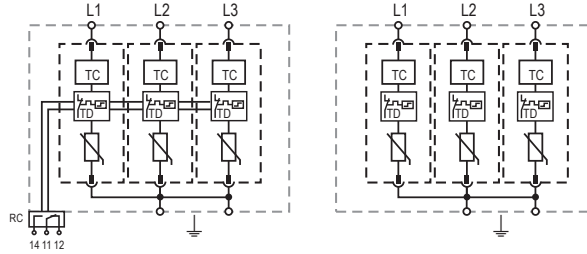
Technical Data

SafeTec T2-xxx-3+0(-R)		150	300	350	480	550	750	880
IEC Electrical								
Nominal AC Voltage (50/60Hz)	U_o/U_n	120 V	240 V	277 V	400 V	400 V	600 V	600 V
Maximum Continuous Operating Voltage (AC)	U_c	150 V	300 V	350 V	480 V	550 V	750 V	880 V
Nominal Discharge Current (8/20 μ s)	I_n	20 kA	20 kA	20 kA	20 kA	20 kA	20 kA	20 kA
Maximum Discharge Current (8/20 μ s)	I_{max}	50 kA	50 kA	50 kA	50 kA	50 kA	35 kA	35 kA
Voltage Protection Level	U_p	1250 V	1650 V	1750 V	2300 V	2500 V	3500 V	3600 V
Response Time	t_A	< 25 ns						
Overcurrent Protection (max)		315 A/250 A gG						
Short-Circuit Current Rating (AC)	I_{SCCR}	25 kA/50 kA						
TOV Withstand 120min	U_T	255 V	442 V	529 V	762 V	918 V	1200 V	1250 V
Number of Ports		1						
UL Electrical								
Maximum Continuous Operating Voltage (AC)	MCOV	150 V	300 V	350 V	480 V	550 V	750 V	880 V
Voltage Protection Rating	VPR	700 V	1200 V	1200 V	1500 V	1800 V	2500 V	2500 V
Nominal Discharge Current (8/20 μ s)	I_n	20 kA	20 kA	20 kA	20 kA	20 kA	20 kA	20 kA
Short-Circuit Current Rating (AC)	SCCR	200 kA	150 kA	200 kA	200 kA	200 kA	200 kA	200 kA
Additional Electrical Parameters (Tests performed within Raycap testing laboratory only)								
Residual Voltage at 5 kA (8/20 μ s)	U_{res}	750 V	1000 V	1300 V	1600 V	1900 V	2700 V	2800 V
Overcurrent Protection (min)		80 A gG						
Mechanical & Environmental								
Operating Temperature Range	T_a	-40 °F to +185 °F [-40 °C to +85 °C]						
Permissible Operating Humidity	RH	5%...95%						
Altitude (max)		13123 ft [4000m]						
Terminal Screw Torque	M_{max}	40 lbf-in [4.5Nm]						
Conductor Cross Section (max)		2 AWG (Solid, Stranded) / 4 AWG (Flexible) 35 mm ² (Solid, Stranded) / 25 mm ² (Flexible)						
Mounting		35 mm DIN Rail, EN 60715						
Degree of Protection		IP 20 (built-in)						
Housing Material		Thermoplastic: Extinguishing Degree UL 94 V-0						
Thermal Protection		Yes						
Operating State / Fault Indication		Green Flag / Not Green Flag						
Remote Contacts (RC)		Optional						
RC Switching Capacity		AC: 250V/1A, 125V/1A; DC: 48V/0.5A, 24V/0.5A, 12V/0.5A						
RC Conductor Cross Section (max)		16 AWG (Solid) / 1.5mm ² (Solid)						

Internal Configuration

Legend

- L Line Conductor Terminal
- ⏚ PEN/G Conductor Terminal
- RC Remote Contacts Terminal (Optional)
- TC Thermal Control Function
- TD Thermal Disconnect



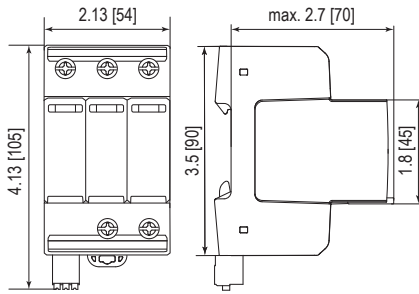
SafeTec T2-xxx-3+0(-R)

Order Information

Order Code	150	300	350	480	550	750	880
SafeTec T2-xxx-3+0	59.0162	59.0164	59.0166	59.0168	59.0170	59.0172	59.0174
SafeTec T2-xxx-3+0-R (with remote contacts)	59.0163	59.0165	59.0167	59.0169	59.0171	59.0173	59.0175
SafeTec T2-xxx-P (plug)	59.0126	59.0127	59.0128	59.0129	59.0299	59.0130	59.0131

Dimensions & Packaging

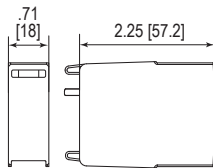
inches [mm]



Complete Unit

SafeTec T2-xxx-3+0	150	300	350	480	550	750	880	
Weight	pounds	.846	.866	.919	.926	.959	1.012	1.025
	grams	384	393	417	420	435	459	465
SafeTec T2-xxx-3+0-R								
Weight	pounds	.866	.886	.939	.946	.979	1.031	1.045
	grams	393	402	426	429	444	468	474
DIN 43880 Dimension	3 TE / 2.13" [54]							
Packaging Dimensions (HxWxL)	4.3 x 4.5 x 13.8" [109 x 115 x 352 mm]							
Standard Order Quantity	5 Units							

Spare Plug



Single Unit

SafeTec T2-xxx-P	150	300	350	480	550	750	880	
Weight	pounds	.139	.146	.163	.165	.176	.194	.198
	grams	63	66	74	75	80	88	90
DIN 43880 Dimension	1 TE / .71" [18]							
Packaging Dimensions (HxWxL)	3.2 x 4.5 x 12" [83 x 116 x 305 mm]							
Standard Order Quantity	24 Units							

Overvoltage Protection
SafeTec T2 4+0
Class II • Type 2 • Type 1CA



Location of Use: Sub-distribution Boards
 Network Systems: TN-S
 Mode of Protection: L-PE, N-PE
 IEC/EN/UL Category: Class II / Type 2 / Type 1CA
 Safety: Current Limiting Technology
 Housing: Pluggable Design
 Compliance: IEC 61643-11:2011
 EN 61643-11:2012+A11:2018
 UL 1449 5th Edition

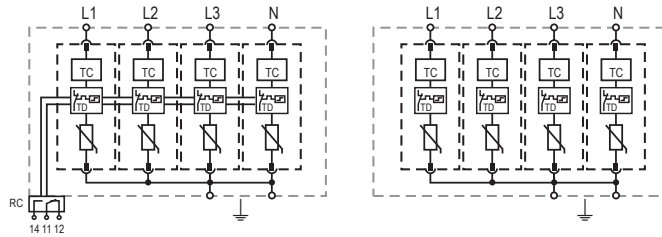
Technical Data

SafeTec T2-xxx-4+0(-R)		150	300	350	480	550
IEC Electrical						
Nominal AC Voltage (50/60Hz)	U_o/U_n	120V	240V	277V	400V	400V
Maximum Continuous Operating Voltage (AC)	U_c	150V	300V	350V	480V	550V
Nominal Discharge Current (8/20 μ s)	I_n	20kA	20kA	20kA	20kA	20kA
Maximum Discharge Current (8/20 μ s)	I_{max}	50kA	50kA	50kA	50kA	50kA
Voltage Protection Level	U_p	1250V	1650V	1750V	2300V	2500V
Response Time	t_A	< 25 ns				
Overcurrent Protection (max)		315 A/250 A gG				
Short-Circuit Current Rating (AC)	I_{SCCR}	25kA/50kA				
TOV Withstand 120min	U_T	255V	442V	529V	762V	918V
Number of Ports		1				
UL Electrical						
Maximum Continuous Operating Voltage (AC)	MCOV	150V	300V	350V	480V	550V
Voltage Protection Rating	VPR	700V	1200V	1200V	1500V	1800V
Nominal Discharge Current (8/20 μ s)	I_n	20kA	20kA	20kA	20kA	20kA
Short-Circuit Current Rating (AC)	SCCR	200kA	150kA	200kA	200kA	200kA
Additional Electrical Parameters (Tests performed within Raycap testing laboratory only)						
Residual Voltage at 5 kA (8/20 μ s)	U_{res}	750V	1000V	1300V	1600V	1900V
Overcurrent Protection (min)		80 A gG				
Mechanical & Environmental						
Operating Temperature Range	T_a	-40 °F to +185 °F [-40 °C to +85 °C]				
Permissible Operating Humidity	RH	5%...95%				
Altitude (max)		13123 ft [4000m]				
Terminal Screw Torque	M_{max}	40 lbf-in [4.5Nm]				
Conductor Cross Section (max)		2 AWG (Solid, Stranded) / 4 AWG (Flexible) 35 mm ² (Solid, Stranded) / 25 mm ² (Flexible)				
Mounting		35 mm DIN Rail, EN 60715				
Degree of Protection		IP 20 (built-in)				
Housing Material		Thermoplastic: Extinguishing Degree UL 94 V-0				
Thermal Protection		Yes				
Operating State / Fault Indication		Green Flag / Not Green Flag				
Remote Contacts (RC)		Optional				
RC Switching Capacity		AC: 250V/1A, 125V/1A; DC: 48V/0.5A, 24V/0.5A, 12V/0.5A				
RC Conductor Cross Section (max)		16 AWG (Solid) / 1.5mm ² (Solid)				

Internal Configuration

Legend

- L Line Conductor Terminal
- N Neutral Conductor Terminal
- PE/G Conductor Terminal
- RC Remote Contacts Terminal (Optional)
- TC Thermal Control Function
- TD Thermal Disconnect



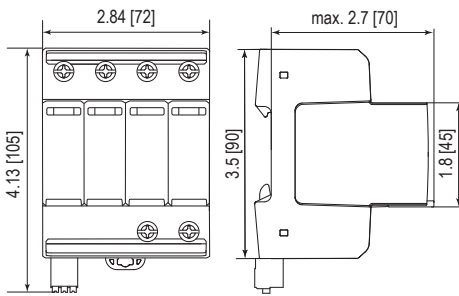
SafeTec T2-xxx-4+0(-R)

Order Information

Order Code	150	300	350	480	550
SafeTec T2-xxx-4+0	59.0176	59.0178	59.0180	59.0182	59.0184
SafeTec T2-xxx-4+0-R (with remote contacts)	59.0177	59.0179	59.0181	59.0183	59.0185
SafeTec T2-xxx-P (plug)	59.0126	59.0127	59.0128	59.0129	59.0299

Dimensions & Packaging

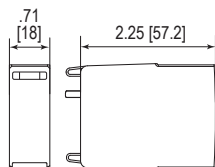
inches [mm]



Complete Unit

SafeTec T2-xxx-4+0	150	300	350	480	550	
Weight	pounds	1.070	1.097	1.167	1.1756	1.220
	grams	485	497	529	533	553
SafeTec T2-xxx-4+0-R						
Weight	pounds	1.090	1.117	1.187	1.196	1.240
	grams	494	506	538	542	562
DIN 43880 Dimension	4 TE / 2.84" [72]					
Packaging Dimensions (HxWxL)	4.3 x 4.5 x 13.8" [109 x 115 x 352 mm]					
Standard Order Quantity	4 Units					

Spare Plug



Single Unit

SafeTec T2-xxx-P	150	300	350	480	550	
Weight	pounds	.139	.146	.163	.165	.176
	grams	63	66	74	75	80
DIN 43880 Dimension	1 TE / .71" [18]					
Packaging Dimensions (HxWxL)	3.2 x 4.5 x 12" [83 x 116 x 305 mm]					
Standard Order Quantity	24 Units					

Overvoltage Protection
SafeTec T2 1+1
Class II • Type 2 • Type 1CA



Location of Use: Sub-distribution Boards
 Network Systems: TT, TN-S
 Mode of Protection: L-N, N-PE
 IEC/EN/UL Category: Class II / Type 2 / Type 1CA
 Safety: Current Limiting Technology
 Housing: Pluggable Design
 Compliance: IEC 61643-11:2011
 EN 61643-11:2012+A11:2018
 UL 1449 5th Edition

Technical Data

SafeTec T2-xxx-1+1(-R)

		75	150	300	350
IEC Electrical					
Nominal AC Voltage (50/60Hz)	U_o/U_n	60 V	120 V	240 V	277 V
Maximum Continuous Operating Voltage (AC)	(L-N) U_c	75 V	150 V	300 V	350 V
	(N-PE) U_c	305 V	305 V	305 V	305 V
Nominal Discharge Current (8/20 μ s)	(L-N)/(N-PE) I_n	20 kA/40 kA	20 kA/40 kA	20 kA/40 kA	20 kA/40 kA
Maximum Discharge Current (8/20 μ s)	(L-N)/(N-PE) I_{max}	50 kA/65 kA	50 kA/65 kA	50 kA/65 kA	50 kA/65 kA
Voltage Protection Level	(L-N)/(N-PE) U_p	800 V/1500 V	1250 V/1500 V	1650 V/1500 V	1750 V/1500 V
Follow Current Interrupt Rating	(N-PE) I_{fi}	100 A			
Response Time	(L-N)/(N-PE) t_A	< 25 ns / < 100 ns			
Overcurrent Protection (max)		315 A/250 A gG			
Short-Circuit Current Rating (AC)	(L-N) I_{SCCR}	25 kA/50 kA			
TOV Withstand 120min	(L-N) U_T	150 V	255 V	442 V	529 V
TOV Withstand 200ms	(N-PE) U_T	1200 V			
Number of Ports		1			

UL Electrical

Maximum Continuous Operating Voltage (AC)	(L-N)/(N-G) MCOV	75V/305V	150V/305V	300V/305V	350V/305V
Voltage Protection Rating	(L-N)/(N-G) VPR	600V/1000V	700V/1000V	1200V/1000V	1200V/1000V
Nominal Discharge Current (8/20 μ s)	(L-N)/(N-G) I_n	20 kA/20 kA			
Short-Circuit Current Rating (AC)	(L-N) SCCR	85 kA	200 kA	150 kA	200 kA

Additional Electrical Parameters (Tests performed within Raycap testing laboratory only)

Residual Voltage at 5 kA (8/20 μ s)	(L-N)/(N-PE) U_{res}	400V/305V	750V/305V	1000V/305V	1300V/305V
Overcurrent Protection (min)		80 A gG			

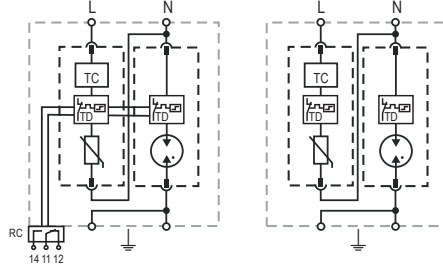
Mechanical & Environmental

Operating Temperature Range	T_a	-40 °F to +185 °F [-40 °C to +85 °C]			
Permissible Operating Humidity	RH	5%...95%			
Altitude (max)		13123 ft [4000m]			
Terminal Screw Torque	M_{max}	40 lbf-in [4.5 Nm]			
Conductor Cross Section (max)		2 AWG (Solid, Stranded) / 4 AWG (Flexible)			
		35 mm ² (Solid, Stranded) / 25 mm ² (Flexible)			
Mounting		35 mm DIN Rail, EN 60715			
Degree of Protection		IP 20 (built-in)			
Housing Material		Thermoplastic: Extinguishing Degree UL 94 V-0			
Thermal Protection		Yes			
Operating State / Fault Indication		Green Flag / Not Green Flag			
Remote Contacts (RC)		Optional			
RC Switching Capacity		AC: 250V/1A, 125V/1A; DC: 48V/0.5A, 24V/0.5A, 12V/0.5A			
RC Conductor Cross Section (max)		16 AWG (Solid) / 1.5 mm ² (Solid)			

Internal Configuration

Legend

- L Line Conductor Terminal
- N Neutral Conductor Terminal
- PE/G Conductor Terminal
- RC Remote Contacts Terminal (Optional)
- TC Thermal Control Function
- TD Thermal Disconnecter



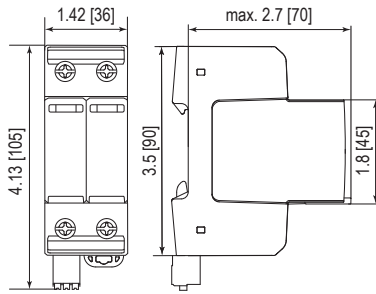
SafeTec T2-xxx-1+1(-R)

Order Information

Order Code	75	150	300	350
SafeTec T2-xxx-1+1	59.0186	59.0188	59.0190	59.0192
SafeTec T2-xxx-1+1-R (with remote contacts)	59.0187	59.0189	59.0191	59.0193
SafeTec T2-xxx-P (plug L-N)	59.0125	59.0126	59.0127	59.0128
SafeTube T2-40-P (plug N-PE)	59.0274	59.0274	59.0274	59.0274

Dimensions & Packaging

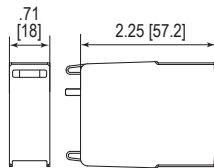
inches [mm]



Complete Unit

SafeTec T2-xxx-1+1	75	150	300	350	
Weight	pounds	.552	.563	.569	.587
	grams	250	255	258	266
SafeTec T2-xxx-1+1-R					
Weight	pounds	.561	.572	.578	.596
	grams	254	259	262	270
DIN 43880 Dimension	2 TE / 1.42" [36]				
Packaging Dimensions (HxWxL)	4.3 x 4.5 x 13.8" [109 x 115 x 352 mm]				
Standard Order Quantity	7 Units				

Spare Plug



Single Unit

SafeTec T2-xxx-P	75	150	300	350	
Weight	pounds	.128	.139	.146	.163
	grams	58	63	66	74
SafeTube T2-40-P					
Weight	pounds	.093			
	grams	42			
DIN 43880 Dimension	1 TE / .71" [18]				
Packaging Dimensions (HxWxL)	3.2 x 4.5 x 12" [83 x 116 x 305 mm]				
Standard Order Quantity	24 Units				

Overvoltage Protection
SafeTec T2 1+1
Class II • Type 2 • Type 1CA



Location of Use: Sub-distribution Boards
 Network Systems: TT, TN-S
 Mode of Protection: L-N, N-PE
 IEC/EN/UL Category: Class II / Type 2 / Type 1CA
 Safety: Current Limiting Technology
 Housing: Pluggable Design
 Compliance: IEC 61643-11:2011
 EN 61643-11:2012+A11:2018
 UL 1449 5th Edition

Technical Data

SafeTec T2-xxx-3+1(-R)

300

350

IEC Electrical

		300	350
Nominal AC Voltage (50/60Hz)	U_o/U_n	240V	277V
Maximum Continuous Operating Voltage (AC)	(L-N) U_c	300V	350V
	(N-PE) U_c	305V	305V
Nominal Discharge Current (8/20 μ s)	(L-N)/(N-PE) I_n	20kA/40kA	20kA/40kA
Maximum Discharge Current (8/20 μ s)	(L-N)/(N-PE) I_{max}	50kA/65kA	50kA/65kA
Voltage Protection Level	(L-N)/(N-PE) U_p	1650V/1500V	1750V/1500V
Follow Current Interrupt Rating	(N-PE) I_{fi}		100A
Response Time	(L-N)/(N-PE) t_A		< 25 ns / < 100 ns
Overcurrent Protection (max)			315A/250A gG
Short-Circuit Current Rating (AC)	(L-N) I_{SCCR}		25kA/50kA
TOV Withstand 120min	(L-N) U_T	442V	529V
TOV Withstand 200ms	(N-PE) U_T		1200V
Number of Ports			1

UL Electrical

		300V/305V	350V/305V
Maximum Continuous Operating Voltage (AC)	(L-N)/(N-PE) MCOV	300V/305V	350V/305V
Voltage Protection Rating	(L-N)/(N-PE) VPR	1200V/1000V	1200V/1000V
Nominal Discharge Current (8/20 μ s)	(L-N)/(N-PE) I_n		20kA/20kA
Short-Circuit Current Rating (AC)	(L-N) SCCR	150kA	200kA

Additional Electrical Parameters (Tests performed within Raycap testing laboratory only)

		1000V/305V	1300V/305V
Residual Voltage at 5 kA (8/20 μ s)	(L-N)/(N-PE) U_{res}	1000V/305V	1300V/305V
Overcurrent Protection (min)			80A gG

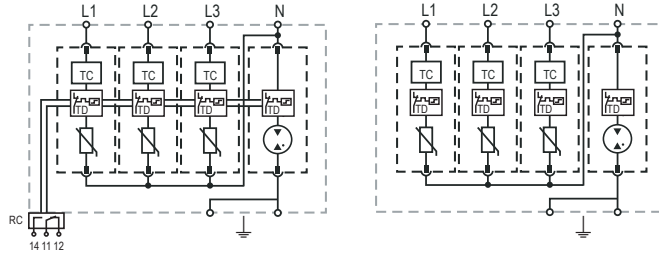
Mechanical & Environmental

Operating Temperature Range	T_a	-40 °F to +185 °F [-40 °C to +85 °C]	
Permissible Operating Humidity	RH	5%...95%	
Altitude (max)		13123 ft [4000m]	
Terminal Screw Torque	M_{max}	40 lbf-in [4.5 Nm]	
Conductor Cross Section (max)		2 AWG (Solid, Stranded) / 4 AWG (Flexible)	
		35 mm ² (Solid, Stranded) / 25 mm ² (Flexible)	
Mounting		35 mm DIN Rail, EN 60715	
Degree of Protection		IP 20 (built-in)	
Housing Material		Thermoplastic: Extinguishing Degree UL 94 V-0	
Thermal Protection		Yes	
Operating State / Fault Indication		Green Flag / Not Green Flag	
Remote Contacts (RC)		Optional	
RC Switching Capacity		AC: 250V/1A, 125V/1A; DC: 48V/0.5A, 24V/0.5A, 12V/0.5A	
RC Conductor Cross Section (max)		16 AWG (Solid) / 1.5 mm ² (Solid)	

Internal Configuration

Legend

- L Line Conductor Terminal
- N Neutral Conductor Terminal
- ⏏ PE/G Conductor Terminal
- RC Remote Contacts Terminal (Optional)
- TC Thermal Control Function
- TD Thermal Disconnecter



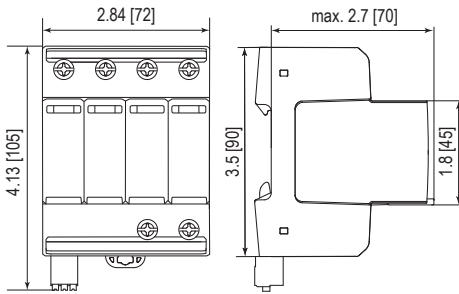
SafeTec T2-xxx-3+1(-R)

Order Information

Order Code	300	350
SafeTec T2-xxx-3+1	59.0198	59.0200
SafeTec T2-xxx-3+1-R (with remote contacts)	59.0199	59.0201
SafeTec T2-xxx-P (plug L-N)	59.0127	59.0128
SafeTube T2-40-P (plug N-PE)	59.0274	59.0274

Dimensions & Packaging

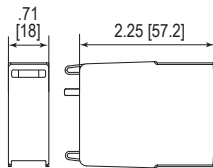
inches [mm]



Complete Unit

SafeTec T2-xxx-3+1		300	350
Weight	pounds	1.066	1.119
	grams	483	507
SafeTec T2-xxx-3+1-R			
Weight	pounds	1.077	1.130
	grams	488	512
DIN 43880 Dimension	4 TE / 2.84" [72]		
Packaging Dimensions (HxWxL)	4.3 x 4.5 x 13.8" [109 x 116 x 352 mm]		
Standard Order Quantity	4 Units		

Spare Plug



Single Unit

SafeTec T2-xxx-P		300	350
Weight	pounds	.146	.163
	grams	66	74
SafeTube T2-40-P		40	
Weight	pounds	.093	
	grams	42	
DIN 43880 Dimension	1 TE / .71" [18]		
Packaging Dimensions (HxWxL)	3.2 x 4.5 x 12" [83 x 116 x 305 mm]		
Standard Order Quantity	24 Units		